

2012 Outback Accessories



■ Rear Bumper Cover
Helps protect the upper surface of the painted bumper from scratches and dings.
E771SAJ000



■ Wheel Arch Molding Kit
Black textured moldings help protect the wheel arch areas, while adding a rugged, yet classy look. The wheel arch moldings look great with the accessory Splash Guards.
E201SAJ000 (Set of four)



■ Splash Guards
Helps protect vehicle paint finish from stones and road grime.
J101SAJ000 (Set of four)



■ Auto-Dimming Mirror with Compass
Mirror automatically darkens when headlights are detected from behind the vehicle. Features an electronic compass with a red transfective display that projects the current direction onto the mirror's surface.
H501SAJ000



■ Auto-Dimming Mirror with Compass and HomeLink®
Mirror automatically darkens when headlights are detected from behind the vehicle. Features an electronic compass with a red transfective display. Three integrated HomeLink buttons can be programmed to operate most garage door openers and other HomeLink devices.
H501SAJ100



■ STI Shift Knob
The ultimate shift knob for your Outback. STI shift knobs combine the highest quality aluminum and leather materials, ergonomic shapes, and ideal weight balance.
C1010FG100 (6 M/T)



■ STI Duracon Shift Knob
Molded from Duracon polymer, this sleek looking and lightweight shift knob gives your Outback a finishing touch that sets it apart from the crowd.
C1010FG400 (6 M/T)



■ Leather-Trimmed Shift Knob
Add a stylish touch with the leather-trimmed shift knob.
C1010AJ010 (A/T)



■ Security System Upgrade - Shock Sensor
Activates security system alarm when impact to the vehicle is detected.
H7110AJ010



■ Wheel Locks
Helps to deter theft of wheels and tires.
B321SFG000 (Alloy Wheels)
T3010YS010 (Steel Wheels)

■ 110 Volt Power Outlet
Add power with a 110 Volt, 100-Watt 2-prong power outlet.
H7110AJ100
SOA635080 (Seat Rail Cover Kit - LH w/ Harman Kardon®)
SOA635082 (Seat Rail Cover Kit - RH w/out Harman Kardon)



■ Trailer Hitch
Subaru hitches are engineered to the same rigorous standards as the rest of your Outback. The hitch is rated at 3,000 lbs. maximum towing capacity with 3.6L engine (2,700 lbs. maximum with 2.5L engine) and 200 lbs. maximum tongue weight.
L101SAJ000
Hitch ball not included. Trailer brakes may be needed.



All-Weather Floor Mats

Custom-fitted, heavy-gauge floor mats help protect vehicle carpet from sand, dirt and moisture.

J501SAJ000

Not intended for use over top of carpeted floor mats.



STI Short Throw Shifter

Significantly reduces shift throw lengths for crisper shifts and sportier driving feel.

C1010AJ100 (6 M/T)



Battery Warmer

Warms vehicle's battery for easier starting in extremely cold weather. Plugs into a household electrical outlet.

J6010FS000



Car Cover

Helps protect the exterior of your Outback. Made of lightweight breathable material.

M001SAJ000

M0010AS020

(Car Cover Bag)



Engine Block Heater

Warms engine coolant to promote easier starting in extreme cold conditions. Plugs into a household electrical outlet.

A091SAS000 (2.5L)

A091SXA000 (3.6L)



STI Pedal Pad Sets

Aluminum pedal covers with non-slip surfaces and STI logo.

C8110FG010 (6 M/T)

C8110FG000 (A/T)



Mobile Internet

The Subaru Mobile Internet turns your Outback into a secure WiFi hotspot. Using 3G network infrastructure, unique technology manages data as you travel between cell phone towers, keeping your passengers connected to the Internet.

H001SAJ200

Driver use only when vehicle is safely stopped with the parking brake engaged. 3G network not available in all areas. Required activation and monthly subscription sold separately. May not be installed in conjunction with the Remote Engine Starter.



Media Hub

Play music through the vehicle's stereo system from your iPod or USB mass storage device and control it using the radio and steering wheel buttons. Displays song information on radio screen and charges most portable music devices.

H621SAJ200

(2.5i Base, 2.5i Base w/ Alloy Wheels & 3.6R Base)

User experience varies by music storage device. Not all devices are compatible. Details at subaru.com/MediaHub.

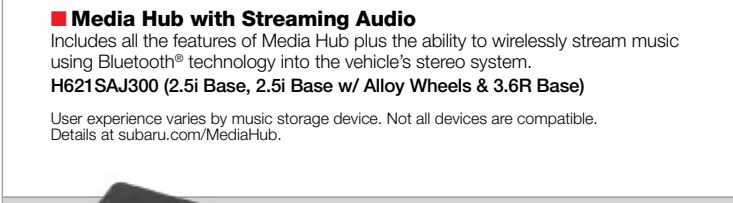


Media Hub with Streaming Audio

Includes all the features of Media Hub plus the ability to wirelessly stream music using Bluetooth® technology into the vehicle's stereo system.

H621SAJ300 (2.5i Base, 2.5i Base w/ Alloy Wheels & 3.6R Base)

User experience varies by music storage device. Not all devices are compatible. Details at subaru.com/MediaHub.



Satellite Radio

Satellite radio allows you to hear your favorite programming virtually anywhere in the continental US with up to 170 channels of digital quality music, sports, talk, and comedy. Your choice of XM® or SIRIUS®.

H621SAJ100 (XM Satellite Radio Kit) - Standard with Harman Kardon

H621SAJ000 (SIRIUS Satellite Radio Kit) - Excludes Harman Kardon

Required monthly subscription sold separately after trial period ends. Additional fees, equipment, and taxes may apply. Not available in Hawaii and Alaska.



Rear Seat Entertainment System

New! Includes two 7" LCD monitors and two DVD players integrated into the replacement front seat headrests. This dual screen system allows rear passengers the option of viewing movies, listening to music or playing games either simultaneously or independently. Individual DVD players may be controlled with control buttons on each front panel or with the included remote control. The system includes wireless headphones*, is iPod®** and MP3 compatible, and includes an A/V jack for connecting external inputs.

H001SAJ300 (Ivory Leather)

H001SAJ400 (Off Black Leather)

H001SAJ600 (Ivory Cloth)

H001SAJ700 (Off Black Cloth)



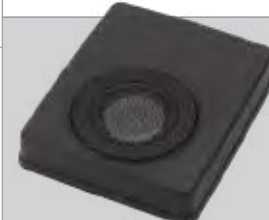
Rear Seat Entertainment Headphones and Remote

New! Wireless headphones and remote are identical to headphones and remote supplied with the Rear Seat Entertainment System.

H001SAJ330 (Headphones)

H001SAJ340 (Remote)

*Headphones are for rear passenger use only. **iPod accessory is not included.



Subwoofer

Big bass sound from a small package. Subwoofer is powered by an integrated amplifier and mounts under driver's seat.

H630SAJ000

(2.5i Base, 2.5i Base w/ Alloy Wheels & 3.6R Base)

SOA635080 (Seat Rail Covers)



Tweeter Kit

Special speakers enhance high-frequency audio response and improve stereo imaging.

H6318AJ000

(2.5i Base, 2.5i Base w/ Alloy Wheels & 3.6R Base)



BlueConnect®



Bluetooth wireless technology combined with advanced voice recognition software allow you to make and receive calls, store phonebook information, and recognize up to seven different cell phones. Voice recognition supports English, North American Spanish and Canadian French.

H001SAJ100 (2.5i Base, 2.5i Base w/ Alloy Wheels & 3.6R Base)

Some phones may not be compatible. Details at subaru.com/Bluetooth.



Severe Weather Companion

The severe weather kit contains just about everything needed to handle an unexpected weather emergency while traveling. Included are items which help provide the basic necessities such as warmth, light, water, first aid, and the ability to signal for help; all packaged in a handy padded canvas carrying case.

SOA868V9500

Cargo Organizer

Conveniently transports your outdoor gear or up to four grocery bags. Quickly collapses for easy storage when not in use.

SOA567T100



■ Audio/Media	■ Racking
■ Exterior	■ Performance
■ Interior	



Subaru of America reserves the right to change or withdraw accessories at any time without prior notice and without incurring the obligation to make changes to any accessories previously sold. All images are representative.



Subaru, Outback, STI and SPT are registered trademarks. Bluetooth is a trademark of Bluetooth SIG. BlueConnect and HomeLink are trademarks of Johnson Controls, Inc. iPod is a trademark of Apple, Inc. SIRIUS is a trademark of SIRIUS XM Radio, Inc. XM is a trademark of XM Satellite Radio, Inc. Harman Kardon is a trademark of Harman International Industries, Inc.

■ Moonroof Air Deflector

Helps reduce wind noise and sun glare.
F541SAJ000

■ Hood Protector

Matches the contours of the hood and helps protect it from stone chips and bugs.
E231SAJ000



■ Front Bumper Underguard

Adds a rugged look while protecting the lower bumper area from brush and debris.
E551SAJ000 (Standard on Limited Models)

■ Key Fob

Made from 1/8" thick 304 stainless steel, with a brushed finish and permanent black laser etched graphics.
SOA342L115 (STI)
SOA342L116 (SPT)
SOA342L129 (Subaru)



■ Valve Stem Caps

Add a finishing touch to your Subaru. These caps feature "O" ring seals to help keep the valve orifices clean.
SOA342L135 (SPT)
SOA342L136 (STI)
SOA342L137 (Subaru Star Cluster)



■ License Plate Frames

Frames are available with a variety of UV resistant polyurethane logos and come in either mirror polish or matte black.

Matte Black
SOA342L124 (SPT)
SOA342L126 (STI)

Polished Stainless Steel
SOA342L121 (SPT)
SOA342L123 (STI)
SOA342L127 (Subaru)

■ Front License Plate Bracket

Stainless steel with black powder coated finish. Includes mounting hardware.
SOA342L120

■ Slim License Plate Frames

Manufactured from heavy-gauge 304 stainless steel that will not rust or corrode. Kit includes hardware hider caps.
SOA342L104 (Polished Stainless Steel)
SOA342L105 (Matte Black)



■ Illuminated Sill Plates

"SUBARU" emits a blue glow each time one of the front doors are opened.
H1010AJ000
H0070AJ000 (Adapter Harness*)

■ Interior Illumination Kit

Mood lighting activates with vehicle's headlights and casts a soft blue glow onto the front footwell areas, forward storage pocket, and console beverage holders.
H7010AJ100
H0070AJ000 (Adapter Harness*)

*Only one adapter harness is required if installing both Illuminated Sill Plates and Interior Illumination Kit in the same vehicle.



■ Cargo Tray

Helps protect cargo area from dirt and spills. Can be removed and rinsed clean.
J501SAJ400



■ Center Caps

New! Replacement center cap set with painted logo for vehicles equipped with unpainted metal center caps.
B315SAJ400



■ 16" Aluminum Alloy Wheel

Add a touch of flair to your Outback 2.5i with these alloy wheels. Order four of each part number.
28111SC010 (Wheel)
28821SA030 (Center Cap)
28191SA000 (Valve Stem)
28192SA000 (Screw)



■ Sunshade

New! Foldable Sunshade offers a triple layer of protection to help reduce inside vehicle temperatures up to 40 degrees. The Sunshade is custom-cut to fit properly, and includes a handy storage bag.
SOA3991000



■ Cargo Net - Rear Seat Back

Additional net storage to help keep the cargo area organized.
F551SAJ001



■ Retractable Cargo Area Cover

Helps conceal the contents of the Outback cargo area.
65550AJ01AVH (2.5i Only)



■ Bike Carrier - Hitch Mounted

Slides into trailer hitch receiver. Carries on cradle supports rotate and lock into position to carrier. Arms can fold down when not in use.
E361SAJ400



■ Side Window Deflectors

Lets the fresh air in while helping to keep the weather out. Deflector design includes integrated chrome insert to match window frame trim.
E3610AJ200

May not be legal in all states. Please check the laws of your state.



■ Rear Bumper Corner Moldings

Helps protect the corners of painted bumpers from scratches and dings. Rear moldings included. Kit includes two moldings.
E771SFJ200



■ Puddle Lights

LED lights activate when vehicle doors are unlocked using the keyless entry. A soft glow illuminates the ground, aiding entry and exit of the vehicle.
H471SAJ100



■ Fog Light Kit

Casts a low and wide beam of light to enhance vision in inclement weather.
H451SAJ100 (2.5i Only)

To avoid blocking taillights, use only roof mounted bike carriers to transport bikes with solid disc wheels. Trailer Hitch sold separately.



■ Cargo Net - Rear

Neatly holds cargo and prevents it from sliding while the vehicle is in motion.

F551SAJ101



■ Dog Guard/Compartment Separator

Separates pets and cargo from passenger area.

F551SAJ400

Not for use with child seats requiring tether straps.

■ Remote Engine Starter

Allows vehicle to be started by pushing a button from the convenience of home or the office (up to 400 feet away depending on obstructions) so that the vehicle's interior temperature is more comfortable upon entry. The start/stop button blinks to confirm the engine has started.

H001SAJ000

May not be installed in conjunction with Mobile Internet.



■ Roof Cargo Carrier

Provides 13 cubic feet of lockable storage capacity. Opens from rear to accommodate loading from three sides.

Measures 56" L x 36" W x 18" H.†††

E361SAG200

■ Roof Cargo Carrier - Extended

Provides 16 cubic feet of lockable storage capacity. Convenient dual-side opening allows for loading from either side of the vehicle.

Measures 76" L x 36" W x 16" H.†††

E361SAJ200

■ Heavy-Duty Roof Cargo Basket

Heavy-Duty Roof Cargo Basket is constructed powder-coated steel. Includes mounting hardware, black stretch net with hooks and a custom fairing to help deflect wind and reduce noise.

Measures 44" L x 39" W x 6.5" H.†††

E361SSA200



■ Kayak Carrier

Cradles and securely transports most kayak hull shapes. Includes straps with padded buckles.†††

E361SXA200 (Kayak Carrier)

E361SAJ800 (Clamps)



■ Anti-Slip Mat (not shown)

Provides a slip resistant covering for rear cargo area trays, bins and carpeted surfaces.

J5010LS040



■ Bike Carrier - Roof Mounted

Lockable padded jaws clamp onto a bike with a 1"-3" downtube and hold it securely on the roof of the vehicle.†††

E361SXA300 (Bike Carrier - Roof Mounted)

E361SAJ800 (Clamps)

■ Bike Carrier - Fork Mount

A fork-mount bike carrier that fits aero, round, and square cross bar shapes without special clamps. It features quick and easy tool-free installation, and an easy-to-adjust sliding wheel tray that makes positioning the rear wheel a snap.†††

E361SAJ300 (Bike Carrier - Fork Mount)

E3610LS430 (Bike Wheel Holder) - not shown

E361SAJ800 (Bike Wheel Holder Clamps)

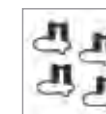
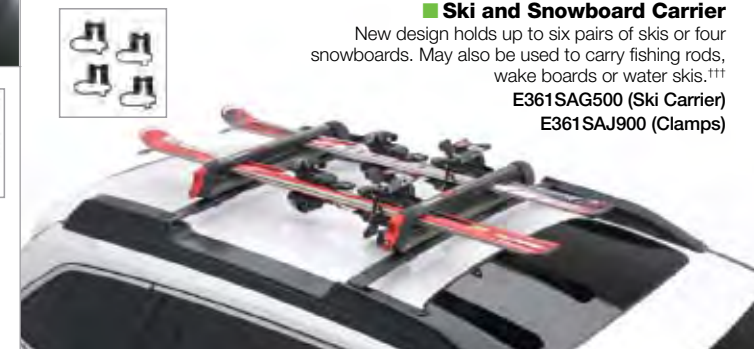


■ Ski and Snowboard Carrier

New design holds up to six pairs of skis or four snowboards. May also be used to carry fishing rods, wake boards or water skis.†††

E361SAG500 (Ski Carrier)

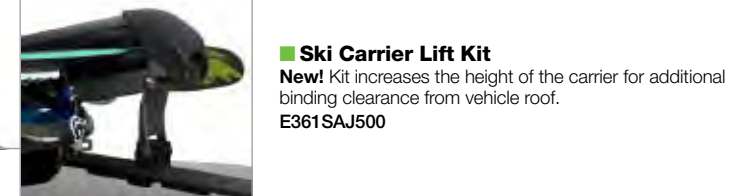
E361SAJ900 (Clamps)



■ Ski Carrier Lift Kit

New! Kit increases the height of the carrier for additional binding clearance from vehicle roof.

E361SAJ500



■ Body Side Molding

Attractive, color-matched moldings coordinate with the styling of the vehicle while helping to protect doors from unsightly dings.

- J101SAJ200I3 (Caramel Bronze Pearl)
- J101SAJ200V3 (Crystal Black Silica)
- J101SAJ200QK (Cypress Green Pearl)
- J101SAJ200L6 (Graphite Gray Metallic)
- J101SAJ200TR (Ice Silver Metallic)
- J101SAJ200B8 (Indigo Blue Pearl)
- J101SAJ200U3 (Ruby Red Pearl)
- J101SAJ200WH (Satin White Pearl)
- J101SAJ200D7 (Sky Blue Pearl)

■ SPT Oil Cap & Battery Hold Down

Replacement oil cap and battery hold down are manufactured from billet aluminum, anodized in Steel Gray or SPT Blue and laser etched with SPT logos.

- SOA3881240 (Oil Cap-Gray)
- SOA3881220 (Battery Hold Down-Gray)
- SOA3881230 (Oil Cap-Blue)
- SOA3881210 (Battery Hold Down-Blue)



■ Cargo Net - Side

Neatly holds smaller cargo items. Kit includes two nets.

F551SAJ201

■ Ash Tray

Fits conveniently in the center console cup holder. Easily removed to empty contents.

92172AG040

F6010AG010 (Mounting Sleeve)



■ Rear Bumper Underguard

New! Completes the rugged look of the Outback.

E551SAJ200

Not compatible with Trailer Hitch.



††† Consult vehicle owner's manual for total roof load limit.